

IDEAL FOR DRILLING AND MEASURING MACHINES



For decades, RÖHM drilling machine vices have been enabling reliable and quick clamping of workpieces on drilling and measuring machines. The entire clamping range can be set by one-handed turning.



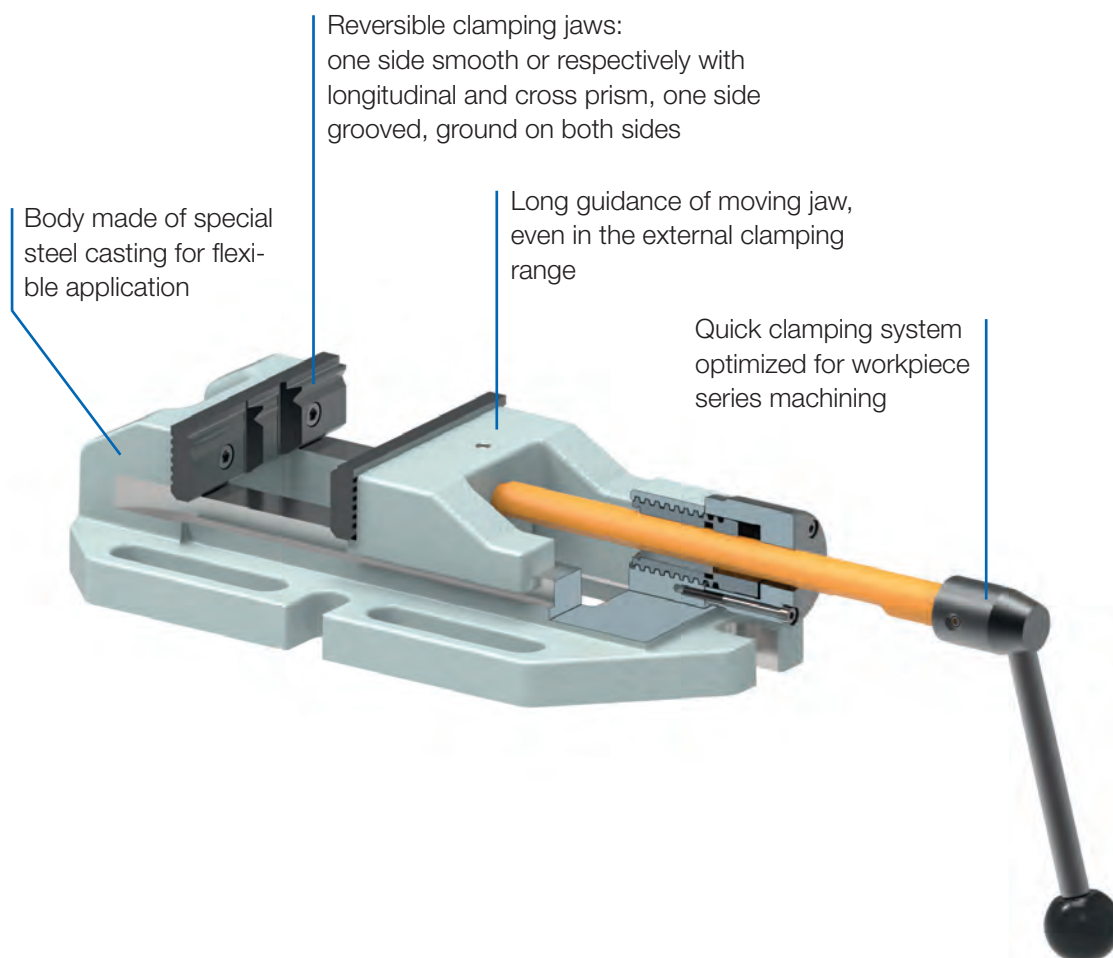
DRILLING MACHINE VICES

The drilling machine vices from RÖHM have seen decades of use in machine shops and production facilities. The vices are especially impressive in drilling and measuring machines thanks to their simple and fast attachment on the machine table as well as their easy and single-handed operation.

ADVANTAGES AT A GLANCE

- ⊕ Reliable and fast clamping of workpieces on drilling and measuring machines
- ⊕ Vice has proven itself over the decades with good price/performance ratio
- ⊕ Entire clamping range can be set by single-handed turning

Drilling machine vices





Drilling machine vices

BMS



APPLICATION

For securely clamping workpieces on drills and measuring machines.

TYPE

Clamping system mechanical, manually operated.
Standard version.

CUSTOMER BENEFITS

- ⊕ **Quick-clamping vice**
- ⊕ For quick clamping and unclamping, particularly in the case of series workpiece machining
- ⊕ Optimal price/performance ratio
- ⊕ One-hand operation
- ⊕ Long guidance of moving jaw, even in the external clamping range
- ⊕ Clamping jaws are reversible, one side smooth and ground on both sides
- ⊕ Solid clamping jaw with one longitudinal prism and two transverse prisms

TECHNICAL FEATURES

- Body made out of special steel casting
- One-hand operation
- Positive locking

A12
BSS, with V-jaw and normal jaw SBO

Item no.	Size	Jaw width mm	Clamping capacity mm	Jaw height mm	Length mm	Height mm	Length body mm	Slot width	Slot distance	Weight kg
134158	2	110	130	32	510	72,5	315	17	140	9,5
134159	3	135	160	40	587	80,5	365	17	170	13,5

Drilling machine vices
BMS

APPLICATION

For securely clamping workpieces on drills and measuring machines.

TYPE

Clamping system mechanical, manually operated.
Standard version.

CUSTOMER BENEFITS

- ⊕ Optimal price/performance ratio
- ⊕ Entire clamping range within reach by turning
- ⊕ Mounting possibilities on the side and frontal
- ⊕ Long guidance of moving jaw, even in the external clamping range
- ⊕ Clamping jaws are reversible, one side smooth and ground on both sides
- ⊕ Solid clamping jaw with one longitudinal prism and two transverse prisms
- ⊕ Both jaws with support surface for clamping flat workpieces

TECHNICAL FEATURES

- Body made out of special steel casting
- Low, stable design with thread spindle



A12
BOF, with V-jaw and normal jaw SBO

Item no.	Size	Jaw width mm	Clamping capacity mm	Jaw height mm	Length mm	Height mm	Length body mm	Slot width	Slot distance	Weight kg
142835	1	90	90	25	356	60	195	14	115	5,5
111595	2	110	130	32	470	72,5	315	17	140	9,5
111596	3	135	160	40	550	80,5	365	17	170	13,5
111597	4	160	220	50	692	95,5	445	17	210	25



Drilling machine vices

BMS



APPLICATION

For securely clamping workpieces on drills and measuring machines.

TYPE

D.I.Y. design for small drill stands.

Clamping system mechanical, manually operated.

CUSTOMER BENEFITS

- ⊕ Lever movable (included in scope of delivery)
- ⊕ Both jaws have a seat for retaining flat workpieces

TECHNICAL FEATURES

- Solid clamping jaw with three vertical prisms and one horizontal prism
- Jaws and spindle gunmetal-finished
- Body made out of cast metal
- Long mounting slots

A12
BSH, small, light D.I.Y. design

Item no.	Size	Jaw width mm	Clamping capacity mm	Length body mm	Width body mm	Height mm	Jaw height mm	Slot distance	Weight kg
007193	1	65	65	125	105	43	25	80	1,2
007194	2	80	85	150	130	46	25	100	1,7
007196	3	100	90	170	175	57	25	135	4,2

APPLICATION

For securely clamping workpieces on drills and measuring machines.

TYPE

Sturdy version for drill stands, table drills and box column drills.

Clamping system mechanical, manually operated.

CUSTOMER BENEFITS

- ⊕ Long lever for maximal clamping force
- ⊕ Both jaws have a seat for retaining flat workpieces

TECHNICAL FEATURES

- Moving steel jaw is supported by a cast iron jaw with inner guidance
- Solid clamping jaw with three vertical prisms and one horizontal prism
- Jaws and spindle gunmetal-finished
- Body made out of cast metal
- Long mounting slots



A12
BSH, sturdy craftsman design

Item no.	Size	Jaw width mm	Clamping capacity mm	Length body mm	Width body mm	Height mm	Jaw height mm	Slot distance	Weight kg
007197	4	80	80	200	140	70	40	100	5
007201	5	100	95	215	175	75	40	125	7
007202	6	120	110	260	215	85	40	160	11
007207	7	140	150	300	220	85	40	165	12,5

Drilling machine vices
BMS



Drilling machine vices

BMS

**APPLICATION**

For securely clamping workpieces on drills and measuring machines.

TYPE**Clamping system mechanical, manually operated.**
Standard version.**CUSTOMER BENEFITS**

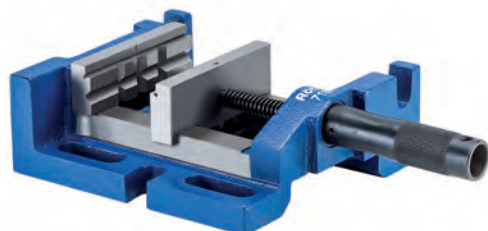
- ③ Entire clamping range within reach by turning
- ③ Constant design length, spindle moves protected in the handle
- ③ The thread spindle is covered by a protecting sleeve

TECHNICAL FEATURES

- Solid and handy version
- Body made out of cast metal
- Movable jaw, guided on side
- Solid clamping jaw with three vertical prisms and one horizontal prism
- Both jaws with support surface for clamping flat workpieces
- Jaws and spindle gunmetal-finished
- Long mounting slots

A12
DPV, with V-jaw and normal jaw SBO

Item no.	Size	Jaw width mm	Clamping capacity mm	Jaw height mm	Length mm	Height mm	Length body mm	Width mm	Slot width	Slot distance	Weight kg
863421	1	80	70	30	234	58	174	142	12,5	105	3,6
863422	2	100	88	30	272	63,5	188	154	14	125	4,3
863423	3	120	110	30	345	63,5	225	180	14	150	6,3
1132597	4	150	125	30	378	65	238	200	14	170	8,1

Drilling machine vices
BMS**APPLICATION**

For securely clamping workpieces on drills and measuring machines.

TYPE**Clamping system mechanical, manually operated.**
Standard version.

3 set-up options thanks to two additional, perpendicularly machined support surfaces: bottom, right and front.

CUSTOMER BENEFITS

- ③ Entire clamping range within reach by turning
- ③ Constant design length, spindle moves protected in the handle
- ③ The thread spindle is covered by a protecting sleeve
- ③ Mounting slots

TECHNICAL FEATURES

- Solid and handy version
- Body made out of cast metal
- Movable jaw, guided on side
- Solid clamping jaw with three vertical prisms and one horizontal prism
- Both jaws with support surface for clamping flat workpieces
- Jaws and spindle gunmetal-finished
- Long mounting slots

A12
DPV 3-W, with V-jaw and normal jaw SBO

Item no.	Size	Jaw width mm	Clamping capacity mm	Jaw height mm	Length mm	Height mm	Length body mm	Width mm	Slot width	Slot distance	Weight kg
007182	2	100	93	30	279	65	189	159	15	122	5,1



Drilling machine vices

Accessories BMS

A37

V-jaw and standard jaw SBO, unhardened and burnished, with workpiece support für BOF und BSS

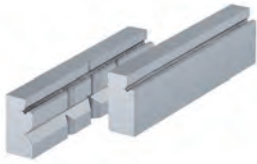


Item no.	Contents of delivery	Size	Width mm	Height mm	Chucking capacity mm	
					Horizontal	Vertical
332714	set	1	90	24,8	4-17	4-25
317259	set	2	110	31,8	3-12	5-32
317260	set	3	135	39,8	3-13	6-40
317261	set	4	160	49,8	5-22	7-48

Including fixing screws

A37

V-jaw and standard jaw SBO, soft and gunmetal-finished, with work support, for DPV



Item no.	Contents of delivery	Size	Width mm
1128341	set	1	85
1128342	set	2	100
1128344 ¹⁾	set	2	100
1128343	set	3	120
1193108	set	4	150

¹⁾ Only for DPV 3-W

